

PNEUMATIC SCREWDRIVER

BAHCO
DORTMUND



PNEUMATIC SREWDRIVER

BAHCO

These high-quality screwdrivers with shut-off meet the high standards of the industry for hand-held screw. The comprehensive range of straight and angle wrenches, comprises a torque range from 0.4 to 145 Nm.

They are characterized by a high degree of repeatability of the switch-off torque and high reliability. The newly designed air motors, guarantee a long service life and maximum power.

The new ergonomic handle design of straight and pistol screwdrivers, increases the grip and the Screwdrivers fit perfectly in your hand. This in turn ensures fatigue-free work and a significant increase in productivity.

In addition to this program, the shut-off, there is also a corresponding range of screwdrivers with slip clutch.



Screwdrivers with shut-off 150 watts

Type	Torque range Nm min. - max	Idle speed UpM	Start Type		Rever- sible	Weight kgs	Ø x l mm	Air- con- sumpt. l/s	Drive	Noise level dBA	Vibra- tions m/s ²
			↕	↕							
15C2A	0.4 - 2.0	2000		w	w	0.58	38 x 230	4.0	F 1/4"	73	< 2.5
15C3A	0.4 - 3.5	1400		w	w	0.59	38 x 230	5.5	F 1/4"	73	< 2.5
15C4A	0.4 - 4.5	950		w	w	0.59	38 x 230	5.5	F 1/4"	73	< 2.5
15C5A	0.4 - 5.0	650		w	w	0.59	38 x 230	5.5	F 1/4"	73	< 2.5
15C2AL	0.4 - 2.0	2000	w		w	0.59	38 x 228	4.0	F 1/4"	73	< 2.5
15C3AL	0.4 - 3.5	1400	w		w	0.60	38 x 228	5.5	F 1/4"	73	< 2.5
15C4AL	0.4 - 4.5	950	w		w	0.60	38 x 228	5.5	F 1/4"	73	< 2.5
15C5AL	0.4 - 5.0	650	w		w	0.60	38 x 228	5.5	F 1/4"	73	< 2.5

↕ L = Lever start

↕ Start with contact pressure



Pistol Screwdrivers with shut-off 150 watts											
Type	Torque range Nm min. - max	Idle speed UpM	Handle Shape		Rever- sible	Weight kgs	Ø x l x h mm	Air- con- sumpt. l/s	Drive 	Noise level dBA	Vibra- tions m/s ²
15C2APA	0.6 - 2.2	2200		w	w	0.70	31 x 178 x 156	6	F 1/4"	71	< 2.5
15C3APA	0.4 - 3.5	1400		w	w	0.72	31 x 178 x 156	6	F 1/4"	71	< 2.5
15C4APA	0.4 - 4.5	950		w	w	0.72	31 x 178 x 156	6	F 1/4"	71	< 2.5
15C5APA	0.4 - 5.0	650		w	w	0.72	31 x 178 x 156	6	F 1/4"	71	< 2.5
15C2AP	0.6 - 2.2	2200	w		w	0.70	37 x 209 x 157	6	F 1/4"	71	< 2.5
15C3AP	0.4 - 3.5	1400	w		w	0.72	37 x 209 x 157	6	F 1/4"	71	< 2.5
15C4AP	0.4 - 4.5	950	w		w	0.72	37 x 209 x 157	6	F 1/4"	71	< 2.5
15C5AP	0.4 - 5.0	650	w		w	0.72	37 x 209 x 157	6	F 1/4"	71	< 2.5



Switching with pushbutton

PA = Pre Deferred pistol grip

Pistol grip = P



Screwdrivers with shut-off 260 watts											
Type	Torque range Nm min. - max	Idle speed UpM	Start Type		Rever- sible	Weight kgs	Ø x l mm	Air- con- sumpt. l/s	Drive 	Noise level dBA	Vibra- tions m/s ²
26C4A	0.4 - 4	2000		w	w	0.80	40 x 235	4,5	F 1/4"	75	< 2.5
26C5A	0.4 - 5	1350		w	w	0.80	40 x 235	6	F 1/4"	75	< 2.5
26C8A	3.5 - 8	1000		w	w	0.90	40 x 255	6	F 1/4"	75	< 2.5
26C10A	3.5 - 9.5	850		w	w	0.90	40 x 255	6	F 1/4"	75	< 2.5
26C12A	3.5 - 12	400		w	w	0.90	40 x 255	6	F 1/4"	75	< 2.5
26C4AL	0.4 - 4	2000	w		w	0.85	40 x 234	6	F 1/4"	75	< 2.5
26C5AL	0.4 - 5	1350	w		w	0.85	40 x 234	6	F 1/4"	75	< 2.5
26C8AL	3.5 - 8	1000	w		w	0.93	40 x 254	6	F 1/4"	75	< 2.5
26C10AL	3.5 - 9.5	850	w		w	0.93	40 x 254	6	F 1/4"	75	< 2.5
26C12AL	3.5 - 12	400	w		w	0.93	40 x 254	6	F 1/4"	75	< 2.5

L = Lever start

Start with contact pressure



Screwdrivers with shut-off 260 watts

Type	Torque range Nm min. - max	Idle speed UpM	Start type		Rever- sible	Weight kgs	ØxLxh mm	Air- con- sumpt l/s	Drive	Noise level dBA	Vibra- tions m/s ²
26C4APA	0.4 - 4	2000		w	w	0.95	39x195x160	7	F 1/4"	73	< 2.5
26C5APA	0.4 - 5	1300		w	w	0.95	39x195x160	7	F 1/4"	73	< 2.5
26C8APA	3.5 - 8	1000		w	w	1.05	39x210x160	7	F 1/4"	73	< 2.5
26C10APA	3.5 - 9.5	800		w	w	1.05	39x210x160	7	F 1/4"	73	< 2.5
26C12APA	3.5 - 12	400		w	w	1.05	39x210x160	7	F 1/4"	73	< 2.5
26C4AP	0.4 - 4	2000	w		w	0.87	38x190x155	7	F 1/4"	73	< 2.5
26C5AP	0.4 - 5	1300	w		w	0.87	38x190x155	7	F 1/4"	73	< 2.5
26C8AP	3.5 - 8	1000	w		w	0.97	38x210x155	7	F 1/4"	73	< 2.5
26C10AP	3.5 - 9.5	800	w		w	0.97	38x210x155	7	F 1/4"	73	< 2.5
26C12AP	3.5 - 12	400	w		w	0.97	38x210x155	7	F 1/4"	73	< 2.5

Switching with pushbutton

PA = Pre Deferred pistol grip

Pistol grip = P



Screwdrivers with shut-off 400 watts

Type	Torque range Nm min. - max	Idle speed UpM	Start type	Reversi- ble	Weight kgs	ØxLxh mm	Air cons. l/s	Drive	Noise level dBA	Vibra- tions m/s ²
CY9AM	7 - 18	800			1.50	46 x 315	10	F 1/4"	80	< 1
CY11AM	7 - 24	550			1.50	46 x 315	10	F 1/4"	80	< 1
CY9RAM-WP	7 - 16	700		w	1.67	46 x 345	10	F 1/4"	80	< 1
CY11RAM-WP	7 - 24	450		w	1.67	46 x 345	10	F 1/4"	80	< 1
CY9PRAM	7 - 16	700		w	1.75	46 x 265 x175	10	F 1/4"	80	< 1
CY11PRAM	7 - 24	450		w	1.75	46 x 265 x175	10	F 1/4"	80	< 1
CY9PRAM-WP	7 - 16	700		w	1.75	46 x 265 x175	10	F 1/4"	80	< 1
CY11PRAM-WP	7 - 24	450		w	1.75	46 x 265 x175	10	F 1/4"	80	< 1

Switch on by pressing

Switching lever

Switch on by pressing + pushbutton

Switching with pushbutton



Angle screwdriver with worm gear											
Type	torque Nm max	Leerlaufdrehzahl UpM	start about push-button	Reversible (1)	Weight kgs	Ø x L mm	head height mm	Air cons. l/s	Drive	Noise level dBA	Vibrations m/s ²
AN 50 S	50	450	☑	w	2.20	51.5 x 345	52	13	F 12 mm	77	< 2.5
AN 90 S	90	125	☑	w	2.35	51.5 x 345	52	13	F 12 mm	77	< 2.5
AN 110 S	110	65	☑	w	2.35	51.5 x 345	52	13	F 12 mm	77	< 2.5
AN 110 - 32 S *	110	32	☑	w	2.35	51.5 x 345	52	13	F 12 mm	77	< 2.5

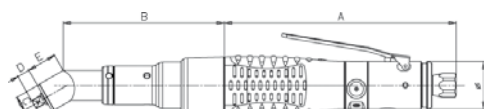
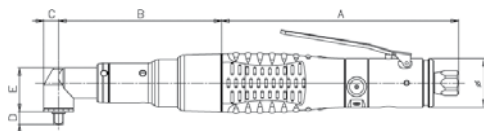
* The max. value of torque (110 Nm) u. Idle speed (32 rpm) have been determined at an air pressure of 3 bar at idle. The air pressure should not exceed 3 bar, in order to guarantee the lifetime of the internal parts of the tool.

(1) Reverse by „paging“.



Flat head screwdriver and angle wrenches

Type	Torque range Nm min. - max	Idle speed rpm	Head Type	Rever- sible	Weight kgs	Air cons. l/s	Drive	Noise level dBA	Vibra- tions m/s ²
A6RSA1	3.5 - 11.5	600		w	1.70	9.0	⬡ F 1/4"	82	< 2.5
A10RYA	12 - 33	250		w	2.75	9.0	⬡ F 14mm	82	< 2.5
15C2A90	0.8 - 2	2000	90°	w	0.70	4.0	⬡ M 1/4"	73	< 2.5
15C3A90	0.8 - 3	1400	90°	w	0.70	5.5	⬡ M 1/4"	73	< 2.5
15C4A90	0.8 - 4	950	90°	w	0.70	5.5	⬡ M 1/4"	73	< 2.5
15C5A90	0.8 - 5	650	90°	w	0.70	5.5	⬡ M 1/4"	73	< 2.5
15C2A30	0.8 - 2	2000	30°	w	0.70	4.0	⬡ M 1/4"	73	< 2.5
15C3A30	0.8 - 3	1400	30°	w	0.70	5.5	⬡ M 1/4"	73	< 2.5
15C4A30	0.8 - 4	950	30°	w	0.70	5.5	⬡ M 1/4"	73	< 2.5
15C5A30	0.8 - 5	650	30°	w	0.70	5.5	⬡ M 1/4"	73	< 2.5
AD6RA1	2.5 - 6	1150	90°	w	1.20	10	⬡ M 3/8"	77	< 2.5
AD9RA1	2.5 - 9	900	90°	w	1.20	10	⬡ M 3/8"	77	< 2.5
AD14RA1	3 - 14	600	90°	w	1.40	10	⬡ M 3/8"	77	< 2.5
AD26RA1	11.5 - 26	350	90°	w	1.45	10	⬡ M 3/8"	77	< 2.5
AG40RA	18 - 40	400	90°	w	2.05	13	⬡ M 3/8"	80	< 2.5
AG60RA	29 - 60	300	90°	w	2.30	13	⬡ M 1/2"	80	< 2.5



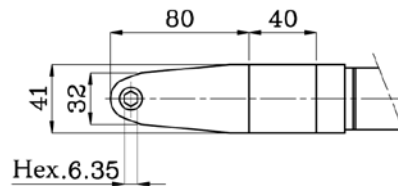
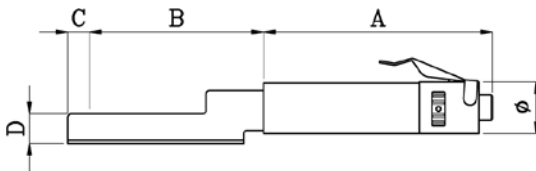
Dimensions in mm

Model	A	B	C	D	E	Ø
15C2A90	157	109	10	8,5	29	32
15C3A90	157	109	10	8,5	29	32
15C4A90	157	109	10	8,5	29	32
15C5A90	157	109	10	8,5	29	32

Model	A	B	C	D	E	Ø
15C2A30	157	109	10	8,5	20	32
15C3A30	157	109	10	8,5	20	32
15C4A30	157	109	10	8,5	20	32
15C5A30	157	109	10	8,5	20	32

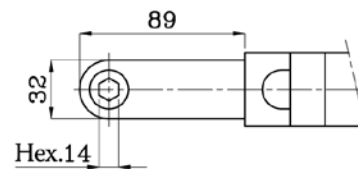
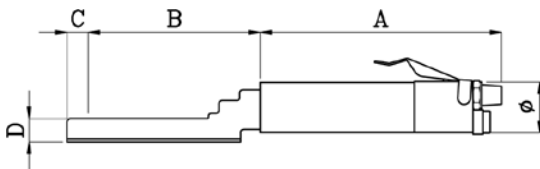
Dimensions in mm

Model	A	B	C	D	Ø
A6RSA1	295	108	12	18	40



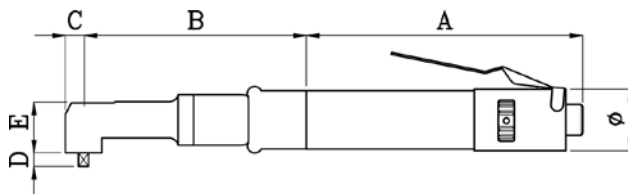
Dimensions in mm

Model	A	B	C	D	Ø
A10RYA	370	134	16	18	46



Dimensions in mm

Model	A	B	C	D	E	Ø
AD6RA1	195	97	12,5	12	30	40
AD9RA1	195	97	12,5	12	30	40
AD14RA1	195	125	14	12	34,5	40
AD26RA1	180	137	14	12	34,5	40
AG40RA	240	163	16	12	40	40
AG60RA	240	178	20	16,5	45,5	40



BAHCO
DORTMUND

BAHCO GmbH & Co.KG

Martener Hellweg 60

DE- 44379 Dortmund

Phone

+49 231/91 72 11-0

Fax

+49 231/91 72 11-22

www.bahco.de

info@bahco.de

BAHCO

All information subject to change without further notice.
No responsibility is taken for the correctness of the named specifications.