

700 BAR

BAHCO
DORTMUND



**MOTOR PUMP SERIES PME
45-1L, -4L & 45-8WP**

BAHCO

These 2-stage, compact motor pumps (-1L and -4L) with die-cast aluminum housing are designed for the operation of single-acting cylinders - also with quick stop nipples (hose rupture protection) - and cutting tools.

The PME Type 45-8WP is suitable for the operation of double-acting cylinders.

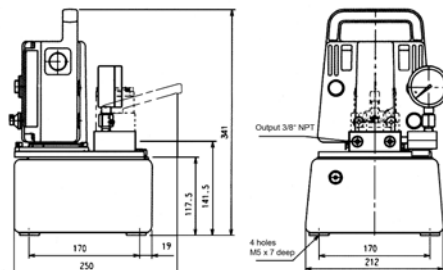
Features:

- Operating pressure 700 bar (optional 800 bar)
- Electric motor 230 V, 0,45KW
- 3/2-way valve, manually controlled (-1L), or 2/2-way solenoid valve (-4L) each with pressure maintenance

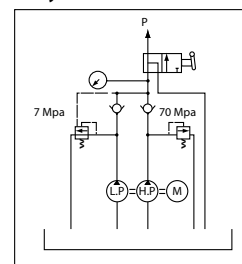
- 4/3-way solenoid valve (-8WP) with unlockable double check valve
- Delivery incl. pressure gauge and mounting
- Motor remote control with a 3 m long cable, control voltage 12 V
- Automatic switching low pressure (LP) / high-pressure (HP)
- For the operation of single acting cylinders with quick stop nipple (hose shatterproof) is for the -4L pump check valve TVP is absolutely necessary

Dimensions

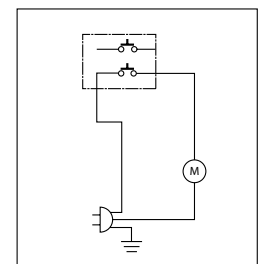
Type	Electric Motor	Valve type	Hydraulic Pump				Effective Oil volume	Weight kg
			Work pressure MPa		Output l/min.			
PME-45-1L	0.45 kW, AC230V, 50/60Hz single phase	3/2-Way-manual-valve w. Pressure control function	1. phase	2. phase	1. phase	2. phase	4.0	16.1
			7 (70 bar)	70 (80)	2.50	0.35		



■ Hydraulic circuit

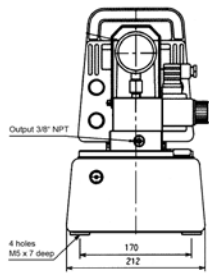
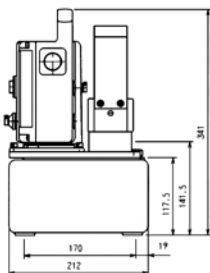


■ Electric circuit

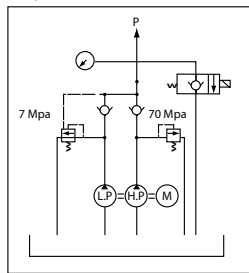


Dimensions

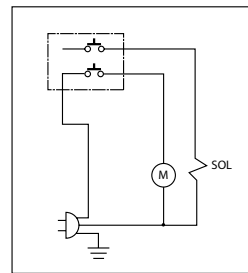
Type	Electric motor	Valve type	Hydraulic Pump				Effective Oil volume	Weight kg
			Work. pressure MPa		Flow l/min.			
PME-45-4L	0.45 kW, AC230V, 50/60Hz single phase	2/2-Way-Solenoid valve w. pres. hold function	1. Phase	2. Phase	1. Phase	2. Phase	4.0	17.2
			7 (70 bar)	70 (80)	2.50	0.35		



Hydraulic circuit

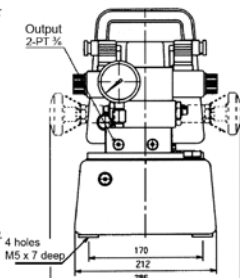
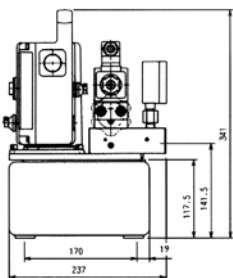


Electric circuit

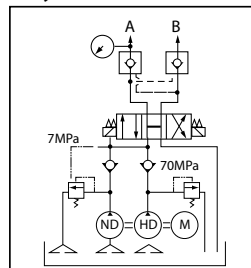


Dimensions

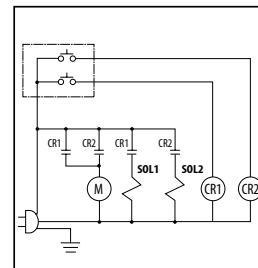
Type	Electric Motor	Valve type	Hydraulic Pump				Effective Oil volume	Weight kg
			Work pressure MPa		Output l/min.			
PME-45-8WP	0.45 kW, AC230V, 50/60Hz single phase	4/3-way solenoid valve with pilot-controlled double check valve. Pressure maintenance of port „A“ & „B“	1. phase	2. phase	1. phase	2. phase	4.0	18.2
			7 (70 bar)	70 (80)	2.50	0.35		



Hydraulic circuit



Electric circuit



BAHCO
DORTMUND



BAHCO GmbH & Co.KG

Martener Hellweg 60

DE- 44379 Dortmund

Phone

+49 231/91 72 11-0

Fax

+49 231/91 72 11-22

www.bahco.de

info@bahco.de

BAHCO