

800 BAR

BAHCO
DORTMUND



**ELECTRIC MOTOR PUMP
SERIES PME**
WITH MANUAL VALVE OPERATION

BAHCO

The hydraulic pumps with electric motor drive are available in both single-stage and two-stage make. Their robust design makes them particularly interesting for the use in industrial areas.

Features:

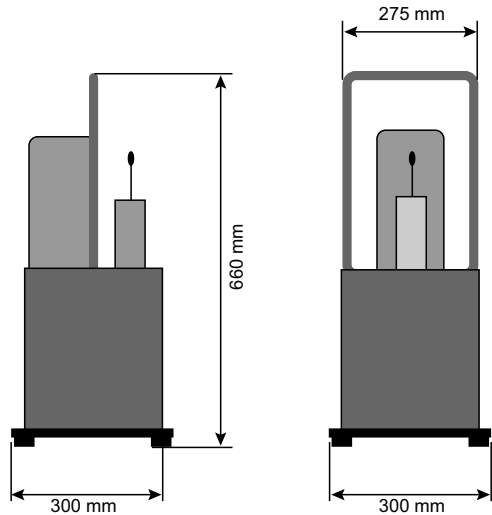
- 9 standard models
- Ready for use
- Portable design
- Hoses, couplings and gauges; see accessories

Special units on request!

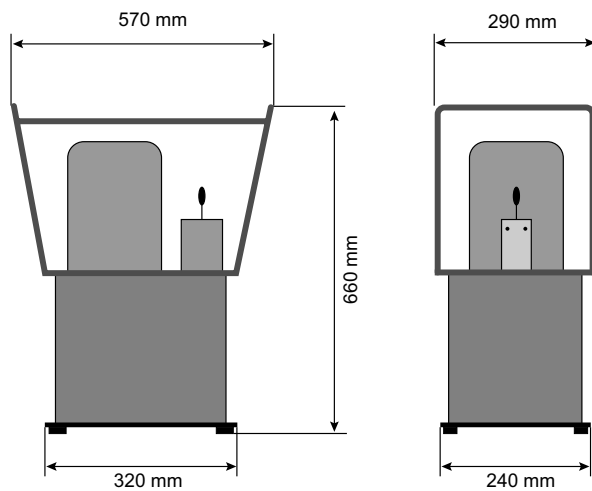
Dimensions					
Model	Order-No.	Valve	Max. Operation pressure MPa/bar	Entire Oil volume l	Effective Oil volume l
PME 101-1	38910110	P+R	80/800	10	9
PME 101-2	38910120	3/3	80/800	10	9
PME 101-3	38910130	4/3	80/800	10	9
PME 102-1	38910210	P+R	80/800	10	9
PME 102-2	38910220	3/3	80/800	10	9
PME 102-3	38910230	4/3	80/800	10	9
PME 152-1	38915210	P+R	80/800	20	18
PME 152-2	38915220	3/3	80/800	20	18
PME 152-3	38915230	4/3	80/800	20	18

Dimensions					
Model	Low pressure l / min.	High pressure l / min.	Motor voltage Volt	Capacity kW	Weight kgs
PME 101-1	-	0.6	230	1.1	30
PME 101-2	-	0.6	230	1.1	31
PME 101-3	-	0.6	230	1.1	31
PME 102-1	3.6	0.3	230	1.1	33
PME 102-2	3.6	0.3	230	1.1	34
PME 102-3	3.6	0.3	230	1.1	34
PME 152-1	5.3	0.9	400	1.5	53
PME 152-2	5.3	0.9	400	1.5	54
PME 152-3	5.3	0.9	400	1.5	54

Technical drawing



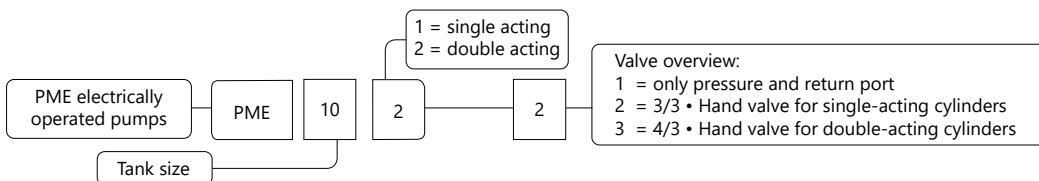
PME 101 & 102
Front- and sideview



PME 101 & 102
Front- and sideview

All information subject to change without further notice.
No responsibility is taken for the correctness of the named specifications.

Model code example



BAHCO
DORTMUND



BAHCO GmbH & Co.KG

Martener Hellweg 60

DE- 44379 Dortmund

Phone

+49 231/91 72 11-0

Fax

+49 231/91 72 11-22

www.bahco.de

info@bahco.de

BAHCO