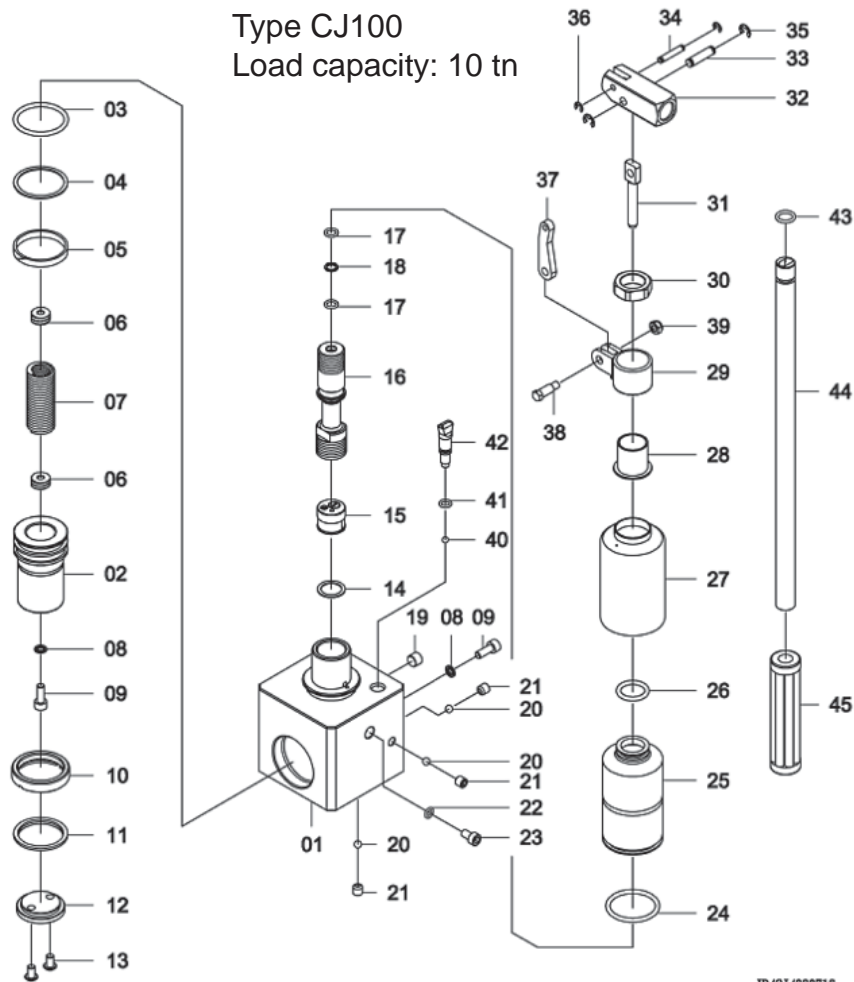


# COMPACT CYLINDER

## Type: CJ 100

Type CJ100  
Load capacity: 10 tn



JR/CJ/980713

No.	Description	Part-No.	Qty	No.	Description	Part-No.	Qty
1	Cylinder	E1918	1	27	Housing	D0757	1
2	Piston	E1919	1	28	Cap	E1413	1
3	O - Ring	GA014	1	29	Clamp	B0640	1
4	Supprt ring	G0015	1	30	Nut	E0866	1
5	Guide band	G0345	1	31	Piston	E2057	1
6	Spring attachment	E1160	2	32	Lever holder	C1136	1
7	Spring return	J0245	1	33	Pin	I0056	1
8	Packing	G0546	2	34	Pin	I0107	1
9	Screw	D0768	2	35	Circlip	I0051	2
10	Bushing	D0768	1	36	Circlip	I0108	2
11	Wiper	G0360	1	37	Connector	C1137	1
12	Pressure head	E1920	1	38	Screw	E0760	1
13	Screw	H0105	2	39	Nut	H0198	1
14	Washer	J00331	1	40	Ball	K0002	1
15	Safety valve	B1062	1	41	O - Ring	GA236	1
16	Piston case	E2056	1	42	Valve screw	E1344	1
17	O - Ring	GA050	2	43	O - Ring	G0003	1
18	Support ring	G0108	1	44	Lever	D0914	1
19	Nipple	H0272	1	45	Handle	G0685	1
20	Ball	K0001	3				
21	Locking screw	H0003	3				
22	O - Ring	G0168	1				
23	Screw	H0036	1				
24	O - Ring	G0011	1				
25	Oil container	G0392	1				
26	O - Ring	G0297	1				

BAHCO GmbH & Co. KG

Martener Hellweg 60  
44379 Dortmund  
Phone: (0231) 91 72 11-0  
Fax: (0231) 91 72 11-20  
Internet: www.bahco.de  
E-Mail: info@bahco.de

Compact Cylinder

Type  
CJ 100

**BAHCO**  
DORTMUND