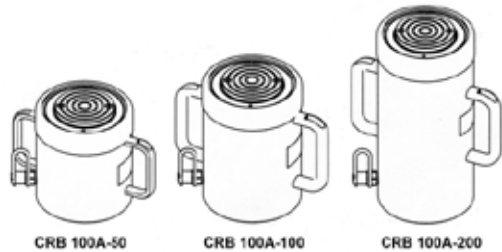
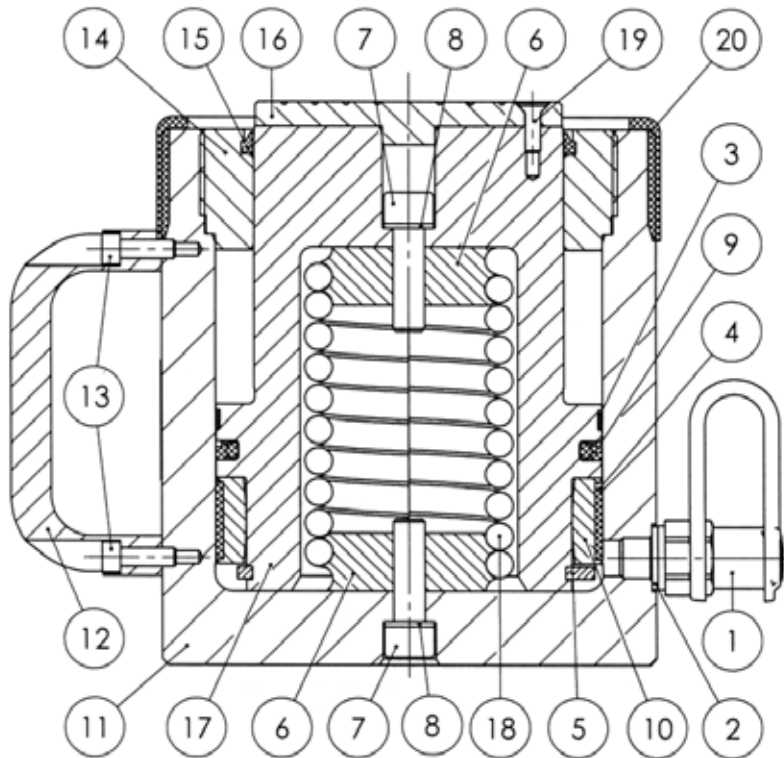


HYDRAULIC-CYLINDER Type: CRB100A-50 | CRB100A-100 | CRB100A-200



Pos.	Qty	Description	Part-No.
1	1	Quick coupling TX23S (optional)	38815500
2	1	Packing	*
3	1	Guide	*
4	1	Guide	*
5	1	Track ring	*
6	2	Spring attachment	**
7	2	Screw	* / **
8	2	Packing	* / **
9	1	Packing	*
10	1	Piston ring	40300144
11	1	Cylinder CRB 100A-50	40301401
11	1	Cylinder CRB 100A-100	40301411
11	1	Cylinder CRB 100A-200	40301421
12	2	Handle CRB 100A-50	51121
12	2	Handle CRB 100A-100	43766
12	2	Handle CRB 100A-200	43766
13	4	Screw CRB 100A-50	51119
13	4	Screw CRB 100A-100	51120
13	4	Screw CRB 100A-200	51120
14	1	Bushing	40301407
15	1	Wiper	*
16	1	Pressure head	40301403
17	1	Piston CRB 100A-50	40301402
17	1	Piston CRB 100A-100	40301412
17	1	Piston CRB 100A-200	40301422

Pos.	Qty	Description	Part-No.
18	1	Spring CRB 100A-50	**
18	1	Spring CRB 100A-100	**
18	1	Spring CRB 100A-200	**
19	2	Screw	10100113
20	1	Protection ring	17266
		* Seal kit	45139
		** Spring kit cpl. CRB100A-50	45140
		** Spring kit cpl. CRB100A-100	45141
		** Spring kit cpl. CRB100A-200	45142
		* incl. in Seal kit cpl.	
		** incl. in Spring kit cpl.	

Documentation commissioner:
Andreas Bos
Version: 01.09.2022

BAHCO GmbH & Co. KG
Martener Hellweg 60
44379 Dortmund
Phone: +49(0)231 91 72 11-0
Fax: +49(0)231 91 72 11-20
Internet: www.bahco.de
E-Mail: info@bahco.de

Hydraulic-Cylinder Spare Part List

Type
CRB 100A-50
CRB 100A-100
CRB 100A-200

BAHCO
DORTMUND