

# 700 BAR

**BAHCO**  
DORTMUND



**HYDRAULIC HEAVY DUTY  
CYLINDER • SERIES LDSC**  
*DOUBLE ACTING*  
*51 TONS UP TO 1085 TONS*

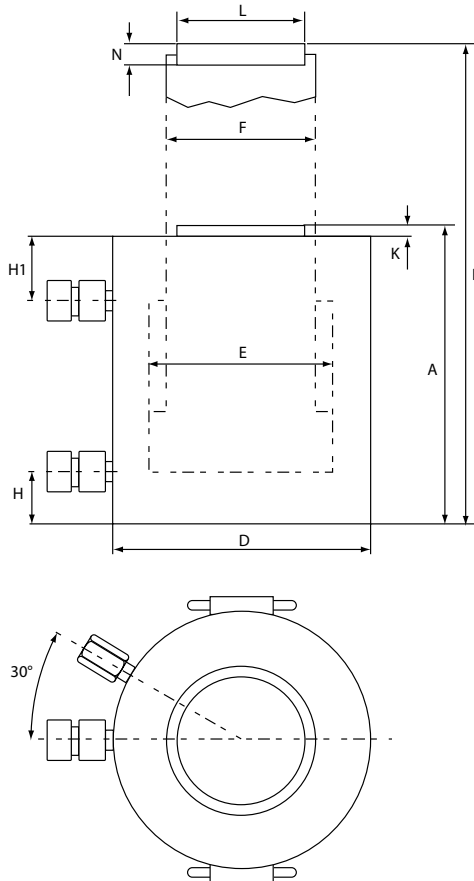
# BAHCO

**Double-acting cylinders of series LDSC**, with capacities from 51 to 1085 tons and stroke ranges from 50 to 300 mm, are suitable for heavy work in vertical and horizontal positions. Thanks to the hydraulic retraction, the piston returns to its starting position very quickly. The cylinders are equipped with a safety valve to prevent overloading.

The piston rod is hard chrome-plated and has an exchangeable pressure plate. For better side load tolerance, the pressure plate can be exchanged for a tilting saddle (separate accessories).

Dimensions						
Model	Capacity Tn (kN)	Stroke length mm	Oil volume cm <sup>3</sup>	A mm	B mm	Weight kg
LDSC05005	51 (496)	50	354	206	256	19
LDSC05015		150	1063	306	456	26
LDSC05030		300	2126	461	761	38
LDSC10005	95 (929)	50	664	196	246	33
LDSC10015		150	1991	296	446	46
LDSC10030		300	3982	451	751	67
LDSC14005	144 (1407)	50	1005	213	263	53
LDSC14015		150	3016	318	468	74
LDSC14030		300	6032	461	761	81
LDSC22005	224 (2199)	50	1571	233	283	90
LDSC22015		150	4712	333	483	120
LDSC22030		300	9425	498	798	169
LDSC31005	310 (3036)	50	2169	251	301	137
LDSC31015		150	6506	357	507	189
LDSC31030		300	13012	512	812	263
LDSC41005	409 (4008)	50	2863	275	325	197
LDSC41015		150	8588	382	532	262
LDSC41030		300	17177	538	838	357
LDSC52005	522 (5114)	50	3653	305	355	287
LDSC52015		150	10959	410	560	371
LDSC52030		300	21918	566	866	496
LDSC61005	611 (5989)	50	4276	315	365	342
LDSC61015		150	12829	420	570	440
LDSC61030		300	25659	576	876	583
LDSC83005	831 (8149)	50	5821	335	385	504
LDSC83015		150	17462	446	596	649
LDSC83030		300	34925	606	906	858
LDSC110005	1085 (10644)	50	7603	365	415	696
LDSC110015		150	22808	476	626	869
LDSC110030		300	45616	636	936	1 116

## Technical drawing



## Dimensions

Capacity Tn	Piston area cm <sup>2</sup>	D mm	E mm	F mm	H mm	H <sub>1</sub> mm			K mm	L mm	N mm
						Stroke 50	Stroke 160	Stroke 300			
51	70.9	125	95	75	25	75	75	80	6	50	20
95	132.7	170	130	100	30	60	60	65	6	75	20
144	201.1	210	160	110	40	65	70	80	6	94	20
224	314.2	260	200	140	50	75	75	85	6	113	25
310	433.7	305	235	200	55	85	85	85	8	140	30
409	572.6	350	270	220	65	95	95	95	10	159,5	30
522	730.6	400	305	250	75	110	110	110	10	179,5	30
611	855.3	430	330	270	80	115	115	115	10	195	30
831	1164.2	505	385	320	95	120	120	120	10	225	30
1.085	1520.5	570	440	340	105	130	130	130	10	250	30

Connection thread: 3/8" NPT

**BAHCO**  
DORTMUND



**BAHCO GmbH & Co.KG**

Martener Hellweg 60

DE- 44379 Dortmund

**Phone**

+49 231/91 72 11-0

**Fax**

+49 231/91 72 11-22

[www.bahco.de](http://www.bahco.de)

[info@bahco.de](mailto:info@bahco.de)

**BAHCO**