

700 BAR

BAHCO
DORTMUND



**HYDRAULIC HEAVY DUTY
CYLINDER • SERIES LESC**

SINGLE ACTING

144 TONS UP TO 1085 TONS

BAHCO

Heavy duty cylinders of the LESC series are available in capacities from 144 - 1085 tons and strokes from 50 - 300 mm. The cylinders are single-acting with load return. They are particularly suitable for lifting platforms, weighing and positioning work in construction.

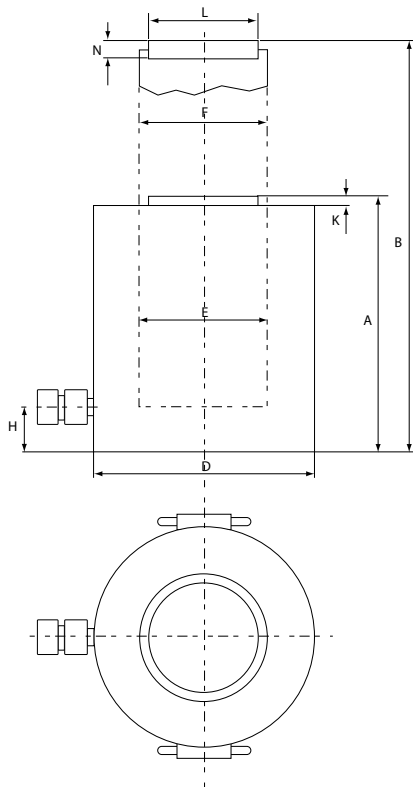
All heavy duty cylinders are equipped with interchangeable, grooved and high fixed support head. To minimize side loads, we recommend that this cylinder series be optionally equipped with tilting saddles, which we deliver on request. A mark is used to limit the stroke, as well as an overflow port.

Dimensions						
Model	Capacity Tn (kN)	Stroke length mm	Oil volume cm ³	A mm	B mm	Weight kg
LESC14005	144 (1.407)	50	1005	160	210	43
LESC14015		150	3016	274	424	74
LESC14030		300	6032	430	730	116
LESC22005	224 (2.199)	50	1571	180	230	75
LESC22015		150	4712	291	441	120
LESC22030		300	9425	451	751	187
LESC31005	310 (3.036)	50	2169	193	243	110
LESC31015		150	6506	309	459	176
LESC31030		300	13012	469	769	267
LESC41005	409 (4.008)	50	2863	215	265	161
LESC41015		150	8588	325	475	244
LESC41030		300	17177	485	785	364
LESC52005	522 (5.114)	50	3653	225	275	221
LESC52015		150	10959	335	485	329
LESC52030		300	21918	495	795	486
LESC61005	611 (5.987)	50	4276	236	286	268
LESC61015		150	12829	346	496	393
LESC61030		300	25659	506	806	574
LESC83005	831 (8.149)	50	5821	263	313	411
LESC83015		150	17462	373	523	583
LESC83030		300	34925	533	833	834
LESC110005	1085 (10.644)	50	7603	292	342	582
LESC110015		150	22808	402	552	801
LESC110030		300	45616	573	873	1142

Dimensions							
Capacity Tn	Piston area cm ²	D mm	E mm	H mm	K mm	L mm	N mm
144	201.1	210	160	40	6	94	20
224	314.2	260	200	50	6	113	20
310	433.7	305	235	55	8	140	30
409	572.6	350	270	65	10	159	30
522	730.6	400	305	70	10	179	30
611	855.3	430	330	80	10	194	30
831	1164.2	505	385	95	10	224	30
1.085	1590.5	570	440	105	10	249	30

Connection thread: 3/8" NPT

Technical drawing



BAHCO
DORTMUND



BAHCO GmbH & Co.KG

Martener Hellweg 60

DE- 44379 Dortmund

Phone

+49 231/91 72 11-0

Fax

+49 231/91 72 11-22

www.bahco.de

info@bahco.de

BAHCO