

700 bar

BAHCO
DORTMUND



HEAVY DUTY CYLINDER OF SERIES LESEC - SINGLE-ACTING

Heavy duty cylinders of the LESEC series are available in capacities from 51 to 1,085 tons and strokes from 50 to 300 mm. The LESEC cylinders are single-acting with load return and with a fully loadable piston stop. This Cylinders are particularly suitable for lifting platforms, weighing and positioning work in construction.

All heavy duty cylinders are equipped with an exchangeable, grooved and high-strength support head. To minimize side loads, we recommend that this cylinder series be optionally equipped with tilting saddles, which we deliver on request.

BAHCO



BAHCO GmbH & Co.KG

Martener Hellweg 60

DE- 44379 Dortmund

Phone

+49 231/91 72 11-0

Fax

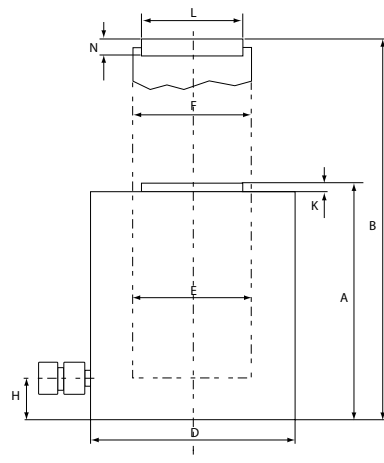
+49 231/91 72 11-22

www.bahco.de

info@bahco.de

| Dimensions | | | | | | |
|-------------|------------------|------------------|----------------------------|------|------|------------|
| Model | Capacity Tn (kN) | Stroke length mm | Oil volume cm ³ | A mm | B mm | Weight kgs |
| LESEC05015 | 51 (496) | 150 | 1063 | 306 | 456 | 26 |
| LESEC05030 | | 300 | 2126 | 461 | 761 | 38 |
| LESEC10015 | 95 (929) | 150 | 1991 | 296 | 446 | 46 |
| LESEC10030 | | 300 | 3982 | 451 | 751 | 67 |
| LESEC14005 | 144 (1.407) | 50 | 1005 | 213 | 263 | 53 |
| LESEC14015 | | 150 | 3016 | 318 | 468 | 74 |
| LESEC14030 | | 300 | 6032 | 478 | 778 | 104 |
| LESEC22005 | 224 (2.199) | 50 | 1571 | 233 | 283 | 90 |
| LESEC22015 | | 150 | 4712 | 333 | 483 | 120 |
| LESEC22030 | | 300 | 9425 | 498 | 798 | 169 |
| LESEC31005 | 310 (3.036) | 50 | 2169 | 251 | 301 | 137 |
| LESEC31015 | | 150 | 6506 | 357 | 507 | 189 |
| LESEC31030 | | 300 | 13012 | 512 | 812 | 263 |
| LESEC41005 | 409 (4.008) | 50 | 2863 | 275 | 325 | 197 |
| LESEC41015 | | 150 | 8588 | 382 | 532 | 262 |
| LESEC41030 | | 300 | 17177 | 538 | 838 | 357 |
| LESEC52005 | 522 (5.114) | 50 | 3653 | 305 | 250 | 287 |
| LESEC52015 | | 150 | 10959 | 410 | 560 | 371 |
| LESEC52030 | | 300 | 21918 | 566 | 866 | 496 |
| LESEC61005 | 611 (5.987) | 50 | 4276 | 315 | 365 | 342 |
| LESEC61015 | | 150 | 12829 | 420 | 570 | 440 |
| LESEC61030 | | 300 | 25659 | 576 | 876 | 583 |
| LESEC83005 | 831 (8.149) | 50 | 5821 | 335 | 385 | 504 |
| LESEC83015 | | 150 | 17462 | 446 | 596 | 649 |
| LESEC83030 | | 300 | 34925 | 606 | 906 | 858 |
| LESEC110005 | 1.085 (10.644) | 50 | 7603 | 365 | 415 | 696 |
| LESEC110015 | | 150 | 22808 | 476 | 626 | 869 |
| LESEC110030 | | 300 | 45616 | 636 | 936 | 1116 |

| Dimensions | | | | | | | | |
|-------------|-----------------------------|------|------|------|------|------|-------|------|
| Capacity Tn | Piston area cm ² | D mm | E mm | F mm | H mm | K mm | L mm | N mm |
| 51 | 70.9 | 125 | 95 | 75 | 25 | 6 | 50 | 20 |
| 95 | 132.7 | 170 | 130 | 100 | 30 | 6 | 71.5 | 20 |
| 144 | 201.1 | 210 | 160 | 110 | 40 | 6 | 94 | 20 |
| 224 | 314.2 | 260 | 200 | 140 | 50 | 6 | 113 | 25 |
| 310 | 433.7 | 305 | 235 | 200 | 55 | 8 | 140 | 30 |
| 409 | 572.6 | 350 | 270 | 220 | 65 | 10 | 159.5 | 30 |
| 522 | 730.6 | 400 | 305 | 250 | 75 | 10 | 179.5 | 30 |
| 611 | 855.3 | 430 | 330 | 270 | 80 | 10 | 195 | 30 |
| 831 | 1164.2 | 505 | 385 | 320 | 95 | 10 | 225 | 30 |
| 1085 | 1520.5 | 570 | 440 | 340 | 105 | 10 | 250 | 30 |



Connection thread G^{3/8}"

All information subject to change without further notice. No responsibility is taken for the correctness of the named specifications.