

700 BAR

BAHCO
DORTMUND



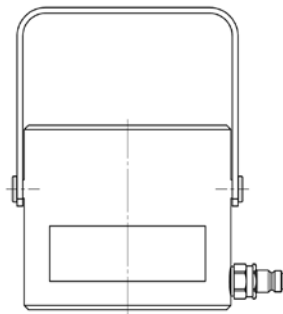
**HYDRAULIC PUSH CYLINDER
SERIES CLF**
SINGLE ACTING WITH SPRING RETURN

BAHCO

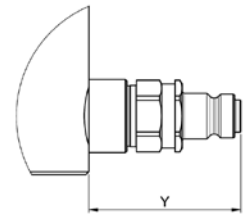
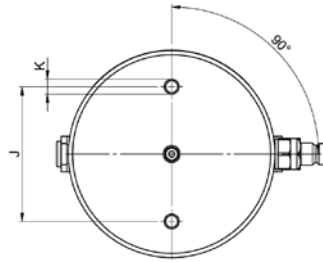
Cylinders of Series CLF are single-acting, compact cylinders in low construction. CLF-cylinders are the right choice if you need a flexible cylinder in confined spaces. Despite the small benefits are height between 5t - 200t reach with this series. Threaded holes for mounting the cylinder increase the flexible use of the CLF-cylinder.

The smallest of the series standard cylinder has a height of only 37 mm and has a power output of 5 tons. Due to the self weight of the cylinder CLF 670-45 and CLF 1100-40 these are supplied with removable handles.

Technical drawing



CLF670-45, CLF1000-40, CLF1100-40

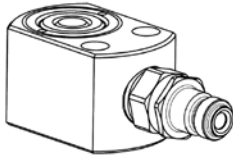


CLF110-30, CLF220-25, CLF220-50

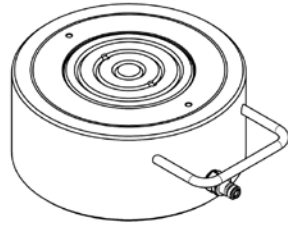
Dimensions

Model	Working pressure MPa	Power kN (tn)	Stroke mm	Oil vol. cm ³	Piston area cm ²	Diameter mm	Length mm	Weight kg
CLF50-10	70	50 (5)	10	7.1	7.1	60	37	0.6
CLF110-10	70	111 (11)	10	15.9	15.9	80	43	1.5
CLF110-30	70	111 (11)	28	44.5	15.9	65	75	1.8
CLF220-13	70	218 (22)	13.5	42.1	31.2	100	50	2.6
CLF220-25	70	218 (22)	25	78.0	32.1	65	50	3.25
CLF220-50	70	218 (22)	50	156.0	31.2	85	107	3.9
CLF450-15	70	445 (45)	15	95.4	63.6	134	68	6.4
CLF450-40	70	445 (45)	40	256.4	63.6	120	120	8.8
CLF670-15 •	70	665 (68)	15	142.5	95.0	146	78	9.2
CLF670-45 *	70	665 (68)	45	427.5	95.0	146	130	14.3
CLF1100-15 •	70	1078 (110)	15	231.0	154.0	180	90	16.0
CLF1100-40 *	70	1078 (110)	40	616.0	154.0	180	140	23.7
CLF1500-15 •	70	1498 (153)	15	321.0	214.0	220	100	28.0
CLF2000-16 •	70	1985 (202)	16	454.0	284.0	250	110	40.0

Technical drawing



CLF50-10 - CLF450-15



CLF450-40 - CLF2000-16



CLF670-45, CLF1000-40, CLF1100-40



CLF110-30, CLF220-25, CLF220-50

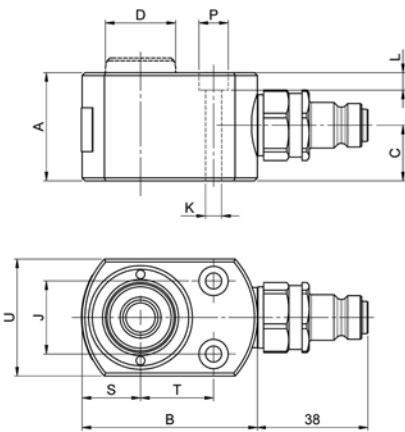
Dimensions

Model	A mm	B mm	C mm	D mm	G	J mm	K	L mm	P mm	S mm	T mm	U mm	V mm	X mm	Y mm
CLF50-10	37	60	18	24	-	25	∅ 5,5 mm	6	10	20	25	40	-	-	-
CLF110-10	43	80	18	35	-	40	∅ 5,5 mm	6	10	33	32	66	-	-	-
CLF110-30	75	65	20	35	-	40	M6	-	-	-	-	-	-	-	51
CLF220-13	50	100	20	50	-	40	∅ 5,5 mm	6	10	44	41	86	-	-	-
CLF220-25	65	96	16	50	-	55	M6	-	-	-	-	-	-	-	38
CLF220-50	107	85	20	50	-	55	M6	-	-	-	-	-	-	-	51
CLF450-15	68	134	20	60	-	67	∅ 12 mm	11	18	60	50	120	-	-	-
CLF450-40	120	120	20	60	-	75	M8	-	-	-	-	-	-	-	-
CLF670-15 •	78	146	20	80	-	110	M8	-	-	-	-	-	60	45	-
CLF670-45 *	130	146	20	80	-	95	M10	-	-	-	-	-	85	-	-
CLF1100-15 •	90	180	20	100	-	120	M8	-	-	-	-	-	60	53	-
CLF1100-40 *	140	180	25	100	-	120	M12	-	-	-	-	-	95	-	-
CLF1500-15 •	100	220	27	125	M8	150	M10	-	70	-	-	-	80	58	-
CLF2000-16 •	110	250	30	140	M8	200	M10	-	70	-	-	-	80	61	-

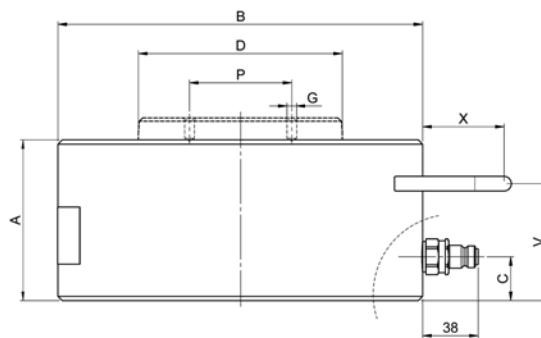
Connection thread for quick coupling G $\frac{1}{4}$ "

- * Equipped with detachable handle
- Equipped with a fixed handle

Technical drawing



CLF50-10 - CLF450-15



CLF450-40 - CLF2000-16

BAHCO
DORTMUND



BAHCO GmbH & Co.KG

Martener Hellweg 60

DE- 44379 Dortmund

Phone

+49 231/91 72 11-0

Fax

+49 231/91 72 11-22

www.bahco.de

info@bahco.de

BAHCO